

WORLDGATE
GROUP



Parker Store

Process control
Filtration
Hydraulics
Pneumatics

Parker
DISTRIBUTOR



Company Profile

WORLD GATE GROUP is one of the growth-oriented company in IRAQ and in the middle East

- World gate group aim to provide its customers with a wide range of products and services at one place.
- We are the main distributor of the Parker company, one of the greatest manufacturer in the world, Parker produce many items which used in many industries.
- We are the main suppliers for many oil field and industry companies in IRAQ and all the middle east.
- We have the main warehouse in Erbil-IRAQ, it contains more than 2000 items from many brands and manufacturers and that gives us many choices to support our costumers

Our Strength

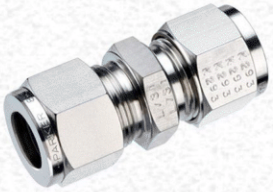
- World Gate Group is a name you can depend on its Knowledge and Expertise.
- More than ten years of experience in the oil field supplying
- Our engineers and sales team are experienced and highly technically qualified
- We have a wide range of products and services which gives many choices to our customers
- Excellent customer relations
- We always work on giving our customers their requirements in best price & delivery time

About Us

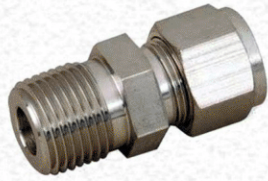
- World Gate Group consists of two companies **World Gate Trading** & **World Gate Serve** with three branches in Dubai, Erbil and Sulaymaniyah

Our Brands

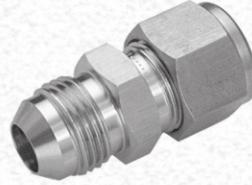




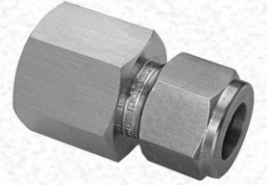
**TUBE X TUBE
(UNION STRAIGHT)**



**TUBE X NPT
(MALE -STR)**



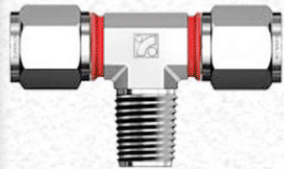
Tube x JIC Male Straight



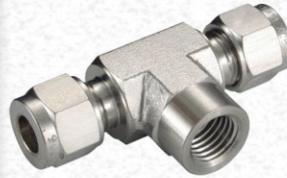
**A-LOK 8FSC8N
TUBE X NPT FEMALE SS316**



**A-LOK TEE TUBE
TO TUBE**



**A-LOK -316
Male Branch Tee**



**TUBE X NPT
(FEMALE BRANCH - TEE)**



**A-Lok Tube x Tube
X NPT FEMALE RUN**



CROSS - 8ECR8-316 GR



**A-LOK - 316
Elbow Union90 Tube**



**TUBE X NPT
(MALE - ELBOW90)**



**TUBE X NPT
(FEMALE - ELBOW90)**



**TUBE X NPT
(MALE - ELBOW45)**



**A-LOK316 SS SET
FRONT+BACK FERRULE**



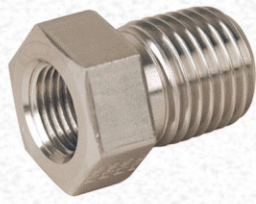
**PARKER PT-CE
TUBE CUTTER**



PTB - TUBE BENDER



NPT NIPPLE MxM
FF-S



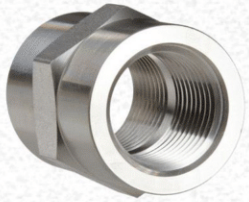
NPT REDUCER BUSHING
PTR-S



NPT REDUCER M x F
FG-S



NPT PIPE ADAPTER
BRASS-222P



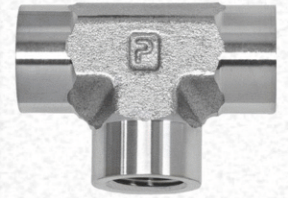
NPT COUPLING
GG-S



NPT - TEE - MxMxM
PRS-S



NPT MXNPT F
BRANCH TEE



NPT - TEE - F x F x F
MMO-S



NPT FXNPT M
BRANCH TEE MMS-S



NPT FXNPT M RUN TEE
MRO-S



NPT MALE ELBOW
CR-S



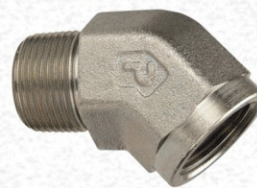
NPT - MxF ELBOW 90
CD-S



NPT - FxF ELBOW 90
DD-S



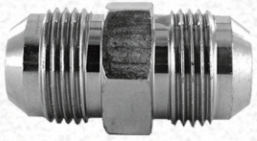
NPT - FxF ELBOW 45
DD45-S



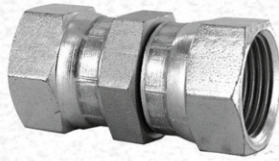
NPT - MxF ELBOW 45
CD 45-S



NPT HEX PLUG
HP-S



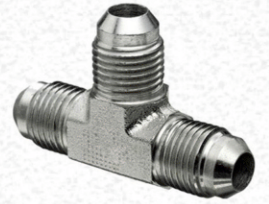
JIC NIPPLE M-M
HTX-S



JIC SWIVEL F X F
HX6-S



JIC M X F SWIVEL
XHX6-S



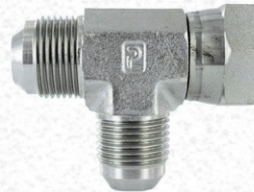
JIC TEE M
JTX-S



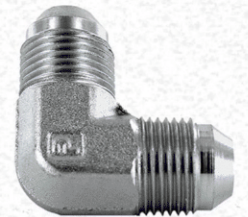
ELBOW JIC F
JX6-S



JIC TEE M X F BRANCH
SWIVEL - S6XSS



JIC M X F RUN TEE
R6X-S



ELBOW JIC M 90°
EMTXS



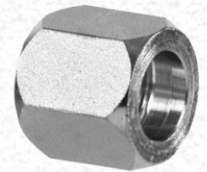
ELBOW JIC MXF 90°
C6MXS



JIC M X F ELBOW
SWIVAL45° - V6X



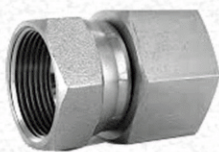
JIC BLUG - PNTX



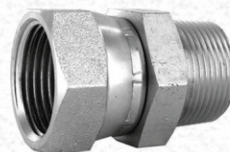
JIC NUT - BTX



NIPPLE JIC M X NPT M
FTX-S



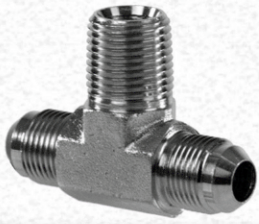
JIC F X NPT F
G6X-S



JIC F X NPT M
F6X-S



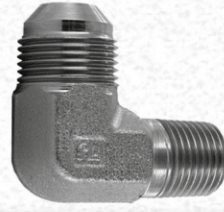
JIC M X NPT F
GTX-S



JIC M X NPT
M BRANCH TEE - STX



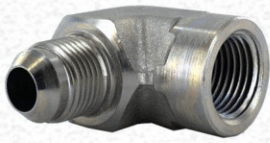
JIC M X NPT
M RUN TEE - RTX



ELBOW JIC M X NPT M 90°
CMTX-S



ELBOW
JIC F SWIVEL X NPT F 90°



JIC M X NPT F 90°
DTX-S



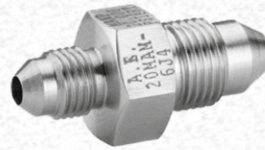
ELBOW JIC M X NPT M 45°
VTX



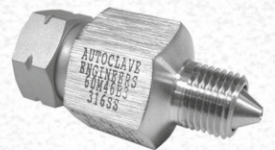
NEEDLE VALVE 2 WAY
20SM9071



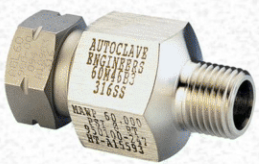
AUTOCLAVE RELIEF VALVE
30RVP6072



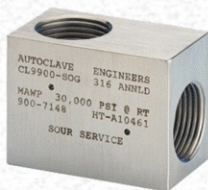
AUTOCLAVE
20MAM6J4



AUTOCLAVE
20M44K6



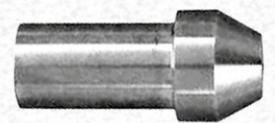
AUTOCLAVE
60M46B3



AUTOCLAVE
CL9900-SOG



AUTOCLAVE CHECK VALVES
CX09900



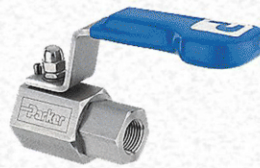
AUTOCLAVE PLUG
CPX90



**NEEDLE VALVE
HNVS8FFHP 10,000 PSI**



**NEEDLE VALVE
HNVS8M8F 6000 PSI**



**BALL VALVE HPBYBBFFHP
10,000 PSI**



**BALL VALVE HPBYB8M8F
6000 PSI**



**INDUSTRIAL
TURBINE 751000FHX ZM**



**BALL VALVE PECTER
ONE WAY XVP502SS**



**BALL VALVE
2F-MB6LPFA-BP**



**BALL VALVE MB
4M-MB6LPFA-SSP**



**BALL VALVE
6A-B6LJ2-V-SSP**



**BALL VALVE 3 WAY
4F-MB6XPFA-SSP**



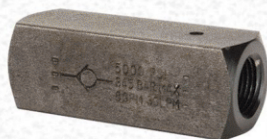
**BALL VALVE 4 WAY
2Z7-MB6X4PFA-SSP**



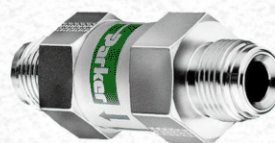
**PLUG VALVE
8F-PR6-VT-B**



CHECK VALVE C600B



CHECK VALVE C600S



**CO SERIES CHECK VALVE
4M-C04L - 1-V-SS-C3**



**PROCESS CHECK VALVE
4A-C4L-25-SS**



**HLS2V-GR INSTRUMENTATION
MANIFOLD VALVE 2 WAY**



**HDS3M SS316
6000 PSI 3 WAY MANIFOLD**



**1/2" F NPT
SS316, 5 WAY MANIFOLD**



**MANIFOLD H SERIES
ALT1ZM**



**REMOTE MOUNTING
5 WAY MANIFOLD VALVE**



**MONOFLANGE
PROCESS VALVE ZM**



KEYBLOCK MANIFOLDS



AUTO DRAIN



**RELIEF VALVES 6000 PSI
R SERIES**



**R119-08J - PILOT
OPERATED REGULATORS**



**ANGEL SEAT VALVE
(PA25S1N6S050A)**



QUICK EXHAUST VALVE



**F600B HYDRAULIC CONTROL
VALVE (B10-881-1)**



**SOLENOID VALVE
WITH COIL**



**SIOWNIK PNEUMATYCZNY
PA-D-O-MAE-O-50/50**



**EM100 SINTERED BRONZE
MUFFLER/FILTER, 250 PSI**



PARKER 791TC EXTREME



PARKER 811 SUCTION HOSE



PARKER NO-SKIVE P35-32



PARKER PARFLEX 560



PARKER
PARFLEX ELIMINATOR HTB



PARKER NO-SKIVE 301SN



PARKER PARFLEX HLB



PARKER NO-SKIVE 341



PARKER
SUPER TOUGH COVER 792TC



PARKER NO-SKIVE 421



PARKER SUPER TOUGH 721ST



PARKER NO-SKIVE 701 4SP



PARKER NO-SKIVE 781



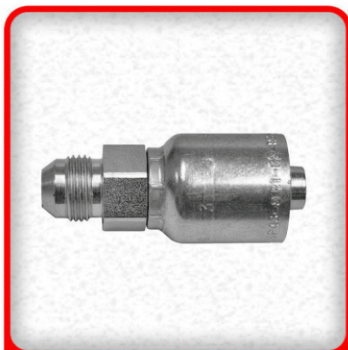
PARKER NO-SKIVE F42



PARKER PARFLEX 510C



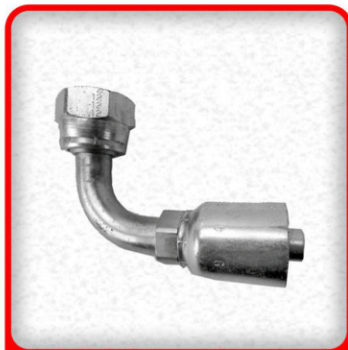
PARKER PPARFLEX 518C



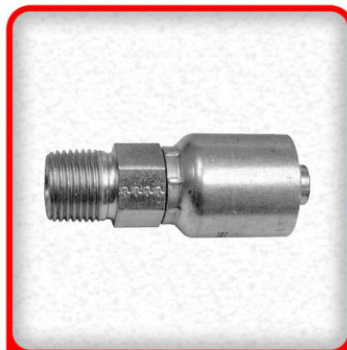
**JIC MALE
STRAIGHT**



**JIC FEMALE SWIVEL
ST R1+R2 - 43 SERIES**



**JIC FEMALE SWIVEL
45 ELBOW-43 SERIES.**



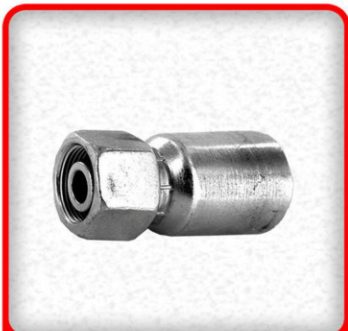
**NPT MALE
STRAIGHT**



**ORFS FEMALE SWIVEL
90 R1+R2- 43 SERIES**



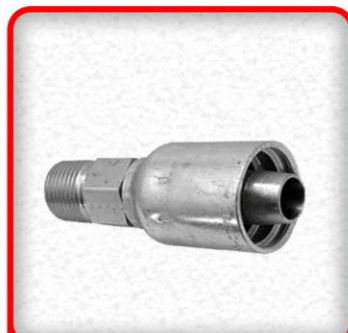
**ORFS FEMALE SWIVEL
45 R1+R2- 43 SERIES**



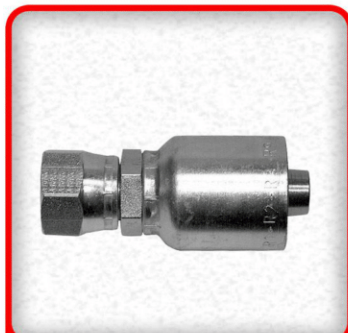
**METRIC FEMALE
SWIVEL ST**



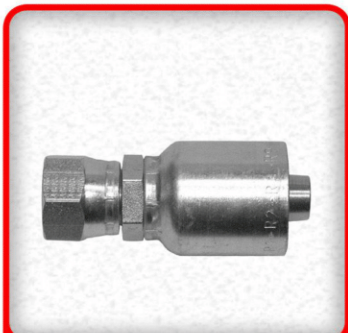
**FLANGE
ST- R1+ R2-43 SERIES**



**BSP MALE
ST- R1+ R2 - 43 SERIES**



**BSP FEMALE SWIVEL
ST- R1+R2 - 43 SERIES**



**BSP FEMALE
ST- TP- 56 SERIES**



ORFS STR SWIVEL



**NPT FEMALE PIPE
ST- 82 SERIES**



**NPT FEMALE PIPE
90 DEG- 82 SERIES**



**NPT SWIVEL
45 DEG - 82 SERIES**



**NPT MALE PIPE
ST- 82 SERIES**



PARKER 500FG



PARKER 900FH30



PARKER 1000FH30



PARKER 75900FHX



PARKER R120T



PARKER R90T



PARKER R90P



PARKER R120P



PARKER 2040PM-OR



PARKER 2040SM-OR



PARKER 2020TM-OR



PARKER 2020N-30-OR



PARKER
10MFP140SA10Q1E4RPDV



PARKER
40CN110CPENPKG244



PARKER
0-24P-1-02Q-ME-1



PARKER
MXR.8550



DOMNICK HUNTER
AIR DRYER



OIL REMOVAL FILTER



NITROGEN GAS
GENERATOR - NITROSOURCE



NITROGEN GAS
GENERATOR



POLESTAR REFRIGERATION
DRYER ZM



DOMNICK HUNTER
AA020DGF



DOMNICK HUNTER
WS020DGF



DOMNICK HUNTER
AOP025ENFI

FABRICATION



SS WIRE BRAIDED HOSE
WITH FLANGE



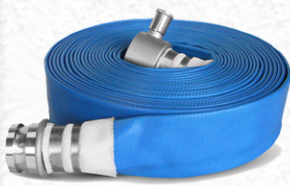
NPST PUP JOINTS



PARKER HAMMER UNION



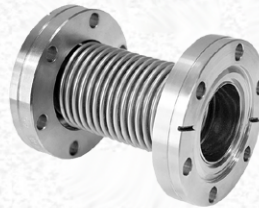
SS WIRE BRAIDED HOSE TYPES



DRINKING WATER HOSE



INTEGRAL FITTINGS



FLEXIBLE COUPLING
FLANGES



PTFE FLANGES



**LEGRIS ELBOW
TUBE-TO-TUBE**



**LEGRIS
CHECK VALVE**



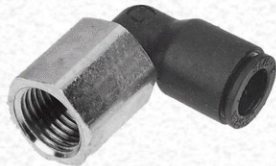
**LEGRIS TEE
TUBE-TO-TUBE**



**LEGRIS STRAIGHT
TUBE-TO-TUBE**



**LEGRIS STRAIGHT
THREADED-TO-TUBE**



**LEGRIS ELBOW
THREADED-TO-TUBE**



**LEGRIS ELBOW
THREADED-TO-TUBE**



LEGRIS TUBE

OTHER ITEMS



**WIKAI PRESSURE GAUGE
(BOTTOM CONNECTION)**



**WIKAI TEMPERATURE
GAUGE**



**WIKAI PRESSURE GAUGE
BRASS**



**WIKAI PRESSURE GAUGE
(BACK CONNECTION)**

OTHER ITEMS

JET-LUBE



**JET-LUBE
EZY-TURN #4**



**JET-LUBE
KOPR-KOTE**



**JET-LUBE
Z-50**



**JET-LUBE
KOV'R-KOTE**

Hummer Union



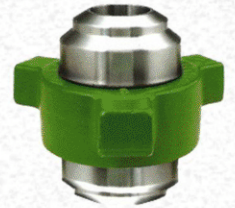
**HUMMER UNION
100 & 200**



**HUMMER UNION
400 & 602**



**HUMMER UNION
1002 & 1502**



**HUMMER UNION
2002**

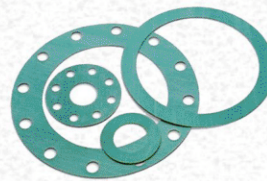
Gasket



**RING JOINT GASKET
R & RX TYPE**



**RING JOINT GASKET
BX TYPE**



GASKETS SHEET



**SPIRAL WOUND
GASKETS**

OTHER ITEMS

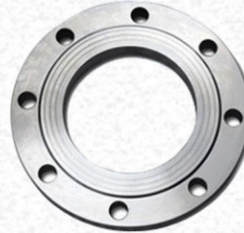
Flange



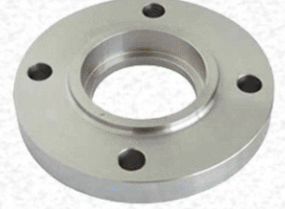
WN FLANGE



BLIND FLANGE



SLIP ON FLANGE



SOCKET WELD FLANGE

Camlok



CAMLOK ALUMINUM



CAMLOK STAINLESS STEEL



BRASS CAMLOCK



CAMLOK POLYPROPYLENE

Pipe Fitting



PIPE FITTINGS PRODUCTION PROCESS



PIPE CROSS FITTINGS

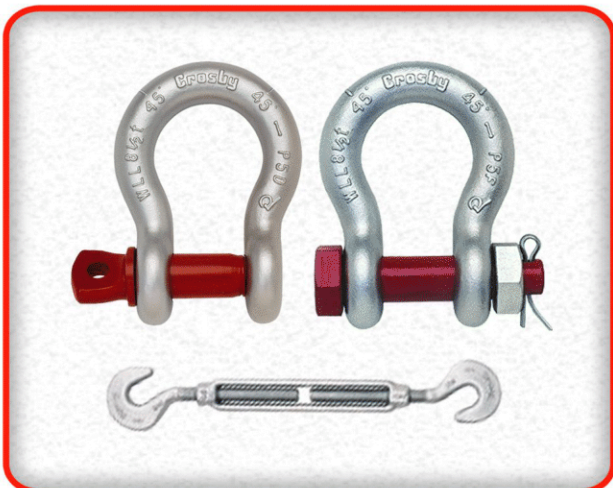
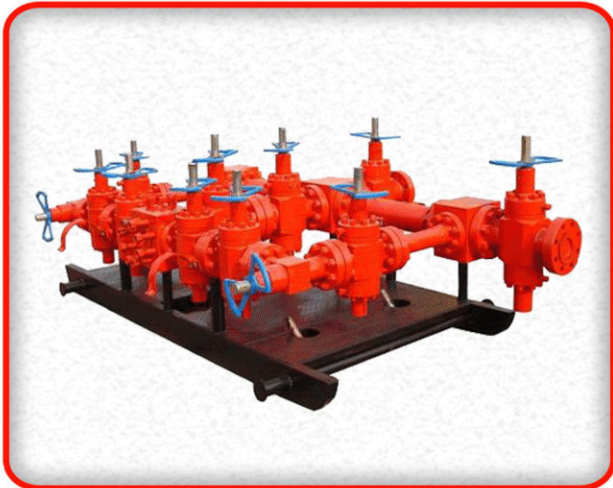


PIPE ELBOW



PIPE CONCENTRIC REDUCER

OTHER ITEMS



OTHER ITEMS

CHICAGO COUPLING



CHICAGO MALE END



CHICAGO FEMALE END



CHICAGO HOSE END



CHICAGO THREE WAY

QUICK COUPLING



PARKER 6600 SERIES



PARKER S71 SERIES



PARKER 3000 SERIES



PARKER 6100 SERIES



PARKER S75 SERIES



DIXON DC10

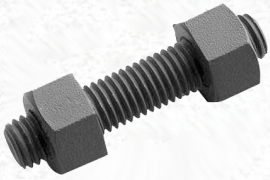


DUST CAP 6109 SERIES

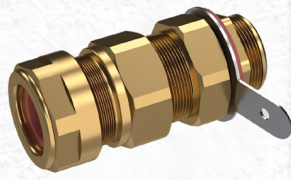


DUST PLUG 6109 SERIES

OTHER ITEMS



STUD BOLTS



CABLE GLAND



COTTON RAGS



OIL PADS



WIRE ROPE SLING 1 LEG



WIRE ROPE SLING 2 LEGS



WIRE ROPE SLING 4 LEGS



WEBBING SLING



SAFETY SHOES



DOTTED GLOVES



GOJO HAND CLEANER



RIG WASH



CLIMAX GREASE GUN



CLIMAX GREASE 325666



EYE WASH



LOCTITE



World Gate Contacts

General Manager

Email | erbilsales@worldgate-oil.com
info@worldgate-oil.com

Mobile | Erbil : +964 - 750 694 4499
Dubai : +971 - 557 855 599

Dubai Office

Email | admin@worldgate-oil.com
Phone | +971 - 4347 8900

Sulymanya Office

Email | suly.sales@worldgate-oil.com
Mobile | +964 - 751 010 2387

Erbil Warehouse

■ *Sales Manager*

Email | sales.manager@worldgate-oil.com
Mobile | +964 - 750 932 0999

■ *Sales Team*

Email | sales1@worldgate-oil.com
Mobile | +964 - 751 551 6700

Email | sales2@worldgate-oil.com
Mobile | +964 - 750 633 7799

Email | sales3@worldgate-oil.com
Mobile | +964 - 751 010 2391

Address

IRAQ - Erbil - Ainkawa - Gazna Road